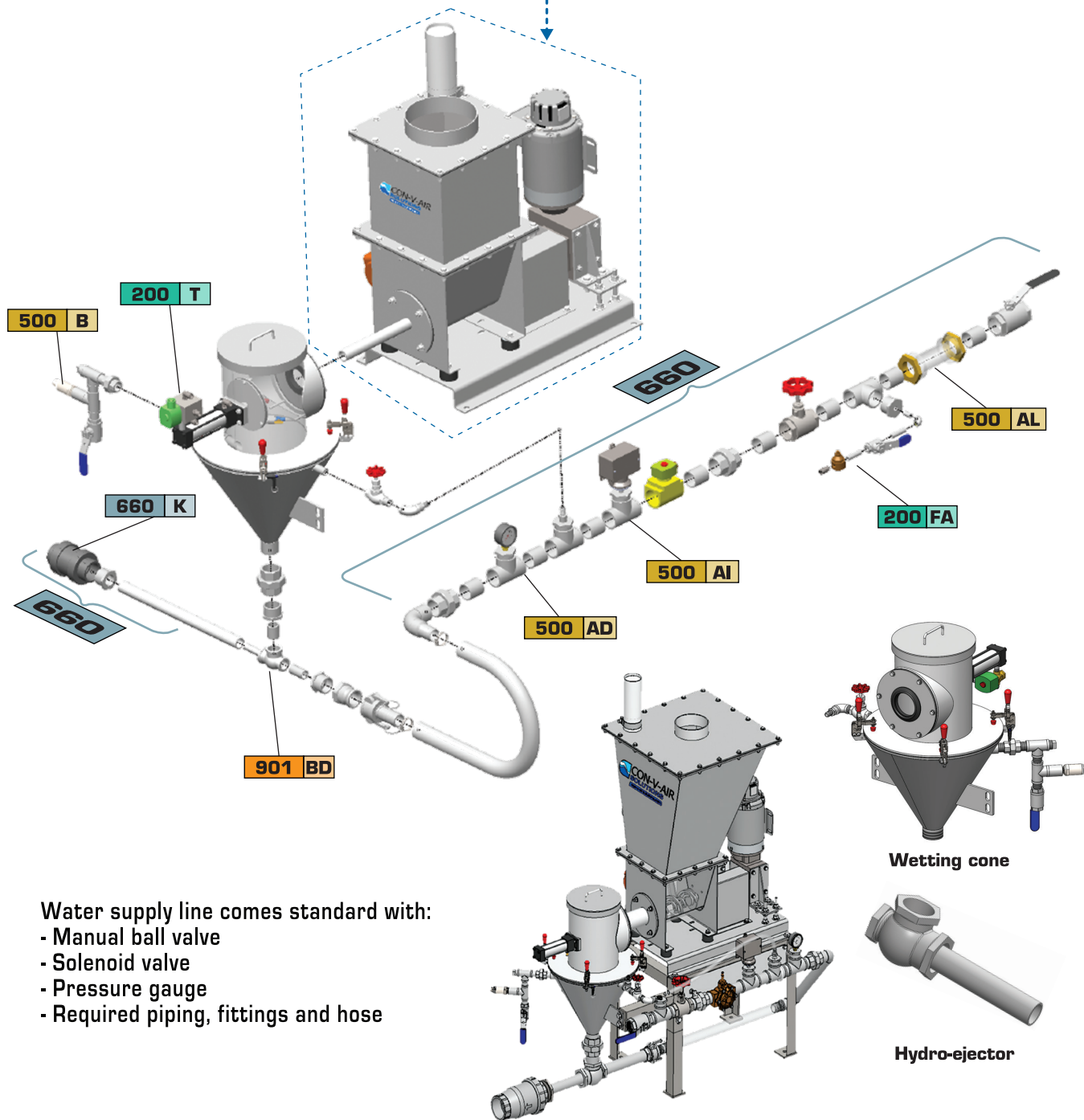
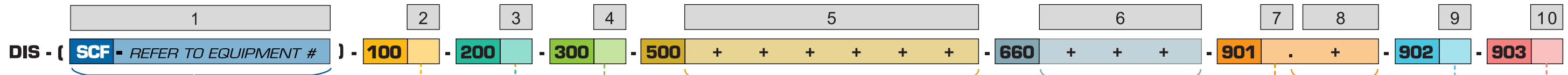


DIS - VARIABLE CONCENTRATION DIRECT INJECTION SYSTEM CONFIGURATOR



Section	Code	Description	Option
RELATED EQUIPMENT			
1	SCF	Screw feeder (Refer to equipment's #)	SCF
CONFIGURATION			
2	AS / CB	Booster pump / Without booster pump	AS / CB
EXCLUSIVE OPTIONS			
3	T / FA	Screw feeder pneumatic spout closing device / Screw feeder hydraulic spout closing device	T / FA
SIZES			
4	D / E / F / G / I	3/4 in. / 1 in. / 1-1/2 in. / 2 in. / 3 in.	D / E / F / G / I
INSTRUMENTS			
5	A / AM / B / AB / AL / AD / AI	Solid level sensor - vibrating rod type / Solid level sensor - tuning fork type / Liquids level sensor - tuning fork type / Flowmeter transmitter / Rotameter / Pressure gauge / Pressure switch	A / AM / B / AB / AL / AD / AI
901 MATERIAL/FINISH/COATING			
8	CR / CS	Glass bead finished / #4 polish on welds in contact with the product	CR / CS
HYDRO-INJECTOR MATERIAL			
7	BB / BC / BD / BE	Bronze injection element / PVC injection element / 316 stainless steel injection element / Cast iron injection element	BB / BC / BD / BE
660 PROCESS ACCESSORIES			
6	D / E / G / K	Pneumatic pinch valve / "Y" strainer / Manual pressure regulator / Check valve	D / E / G / K
902 CONTROL PANEL			
9	H / I / J	Junction box / Equipment and instruments prewired to the control panel provided by CON-V-AIR / Control panel provided by others	H / I / J
903 CERTIFICATION/CLASSIFICATION			
10	B / C / G	Class 2, division 2 / Class 1, division 1 / Class 2, division 1	B / C / G

000 : Section number Letters : Option code + : Multiple options . : Single option Ø : Symbol to enter if no option selected

Water supply line comes standard with:
 - Manual ball valve
 - Solenoid valve
 - Pressure gauge
 - Required piping, fittings and hose

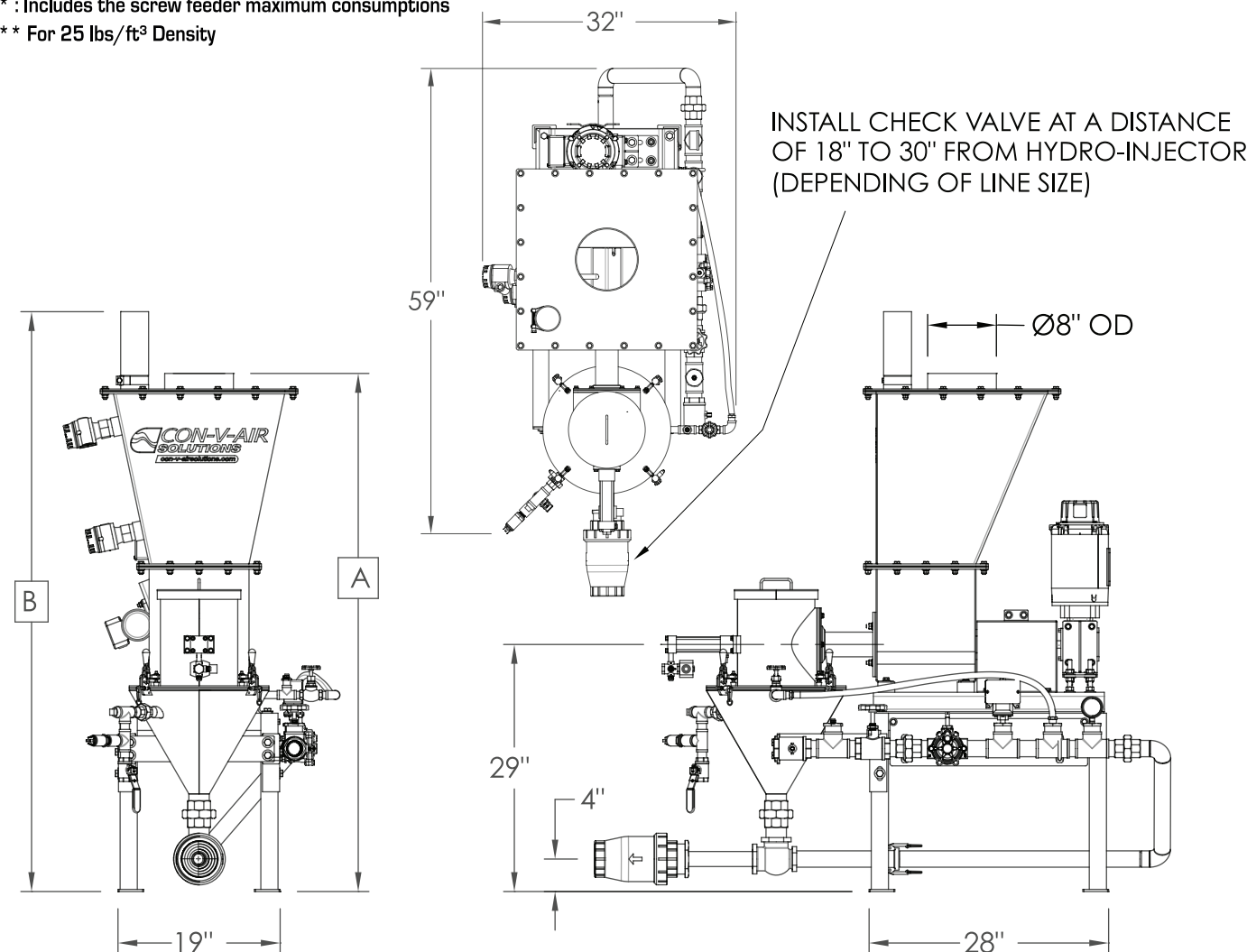


DIS - VARIABLE CONCENTRATION DIRECT INJECTION SYSTEM CONFIGURATOR

INJECTION CAPACITIES TABLE													
	Pressure Ø	Suction / Discharge Ø	Max. Dry Chemical Feed Rate		Discharge Pressure (PSI)	Suction Capacities (ft ³ /hr)	Water Inlet Pressure (PSIG)	Water Consumption		Air Consumption *		Electrical Consumption *	
			kg/min**	kg/hr**				GPM	L/min	CFM	PSIG	kW	HP
W/O BOOSTER PUMP	3/4	1	0.13	8	15	17	60	17	64	1	40	0.75	1
	1	1-1/2	0.6	35		58		223					
	1-1/2	2	4.5	275		106		400					
W/ BOOSTER PUMP	3/4	1	0.13	8	120	17	30	17	64	1	40	2.2	4
	1	1-1/2	0.6	35		58		223	5.5			8.5	
	1-1/2	2	4.5	275		106		400	5.5			8.5	
	3	4	12.5	750		605		605	2287			11	16

* : Includes the screw feeder maximum consumptions

** For 25 lbs/ft³ Density



* : DIS-750 Models goes up to 750 kg/h of dry chemical feed

MODEL DIS-750 *	DRY BULK STORAGE	ADDITIONAL OPTIONS	CONFIGURATION #	DIMENSIONS				WEIGHT
				PRODUCT INLET "A"		OVERALL HEIGHT "B"		TOTAL
				in.	mm	in.	mm	lbs
	1 ft ³	- W/O Spout Closing Device - W/O Booster Pump	#DIS-(SCF-400A)-100CB	52	1321	59	1499	455
	1.5 ft ³	- W/ Pneumatic Spout Closing Device - W/O Booster Pump	#DIS-(SCF-400B)-100CB-200T	56	1422	63	1600	465
	3 ft ³	- W/ Pneumatic Spout Closing Device - W/O Booster Pump	#DIS-(SCF-400C)-100CB-200T	60	1524	67	1702	485
	5 ft ³	- W/ Hydraulic Spout Closing Device - W/O Booster Pump	#DIS-(SCF-400D)-100CB-200FA	72	1829	79	2007	535
	7 ft ³	- W/ Hydraulic Spout Closing Device - With Booster Pump	#DIS-(SCF-400E)-100AS-200FA	80	2032	87	2210	560

TYPICAL DRY CHEMICAL		
Dry Chemical	Bulk Density	
	lbs/ft ³	kg/m ³
Activated Carbon	20	320
Soda Ash	55	880
Potassium Permanganate	95	1520
Dry Polymer	60	960
Magnesium Oxide	65	1041

